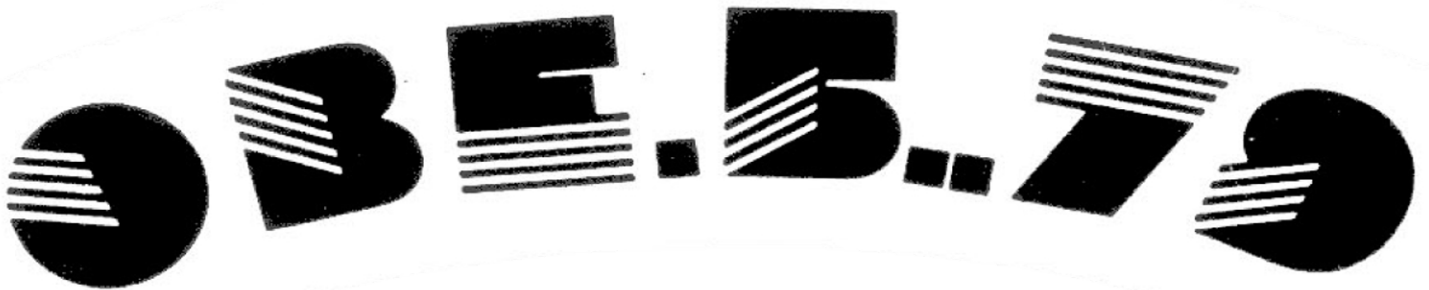


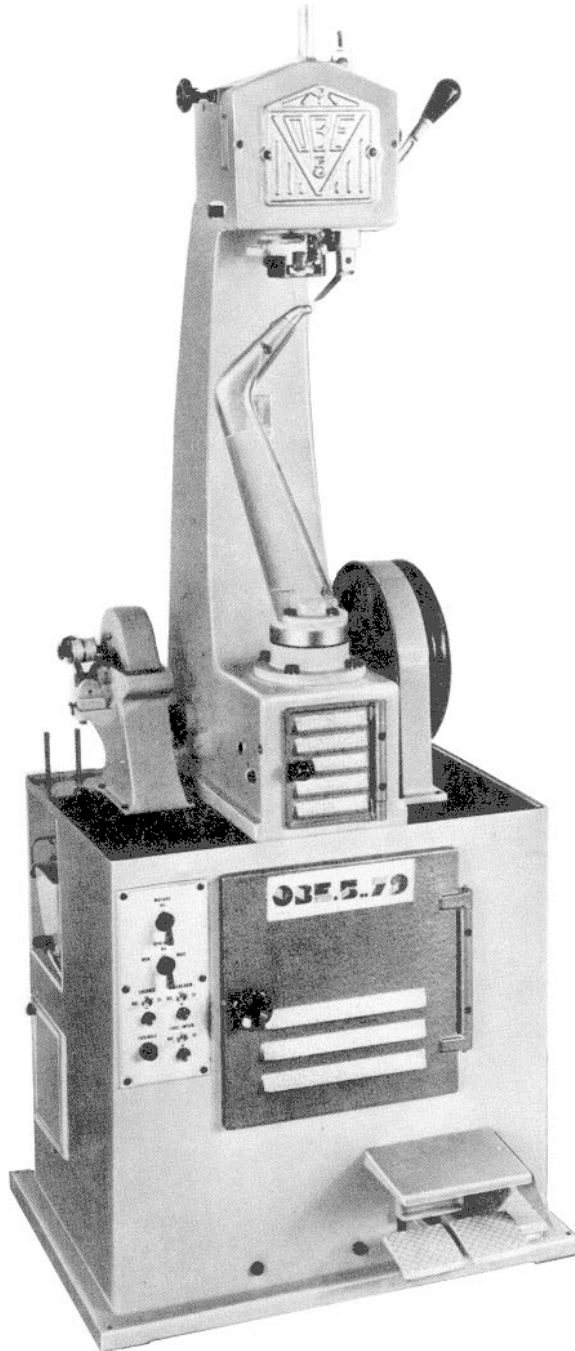
LOCKSTITCH SEWING MACHINE

OPERATOR MANUAL



MACHINERIE ORTHOPEDIC MAQUINARIA
D'ORTHOPÉDIE ET AND SHOE DE ORTOPEDIA
DE CORDONNERIE MACHINERY Y ZAPATERÍA
800, Rossiter, Saint-Jean-sur-Richelieu
(Québec) Canada J3B 8J1
www.landisinternational.ca info@landisinternational.ca
(450) 359-8800 1-800-634-0806 Fax: (450) 359-9619

OBE.5.79



LOCKSTITCH SEWING MACHINE

INSTRUCTIONS FOR USE AND MAINTENANCE OF LOCKSTITCH SEWING MACHINE "OBE 5-79"

INSTALLATION

In order to obtain a good stability of the machine on the floor, it's recommended to put rubber pieces 4-5 mm. thick, under the four corners of the base.

ATT.: In order not to damage the machine, before the beginning of stitching, pay attention to the following instructions:

- 1) Check if the motor type coincides with the electric power of the work shop.
- 2) Make sure that the tripper N° A041A locks the knob N° A041. Position A of the small hook N° A0438.
- 3) Plugged the electrical plug in the tap, turn on the motor switch. Check the direction of rotation indicated by the arrow on the pulley N° A0107.
In case of opposite direction, change the connection of two cables of the plug, letting the central cable (earth cable) in its position.
- 4) After the point 3) operation, free the knob N° A041 from the tripper N° A041A. Position B of the small hook N° A0438.

SEE FIG. 1 Position A = position of the tripper before the beginning of stitching.
Position B = position of the tripper after the direction of rotation checking.

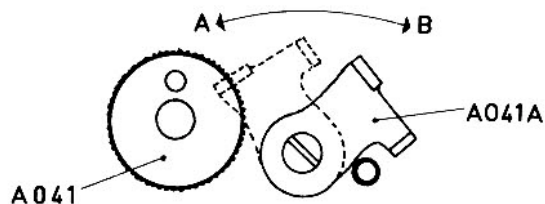


FIG.1-

SUGGESTIONS FOR GOOD OPERATION

- 1) Use needles in relation to the used thread:
Es.: Sewing thread 5 cords with needle N° 5.
- 2) Use high quality linen thread right twist for horn.
- 3) Use, for the shuttle, a thread with 1 or 2 cords more than the horn thread.
Es.: horn thread 5 cords, shuttle thread 6-7 cords.
- 4) Moisten the outsole before sewing in order to keep it soft.

STITCHING SPEED

The machine can operate at two speeds. To change speed, move the belt T. into the race of the motor pulley V.

PRELIMINARY OPERATIONS

a) PREPARATION OF THE THREAD FOR THE WINDING-SPOOLS DEVICE

The machine is delivered with a piece of thread that shows the run from the clew container to the winding-spools device.

To thread the spool thread see Fig. 2.

In order to put on the new clew, following steps have to be made:

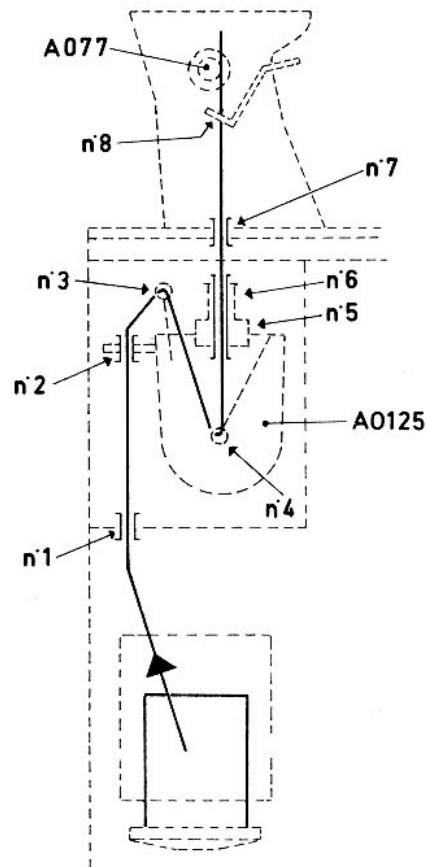


FIG. 2-

- 1) Loosen the stripper plug N° A0117.
- 2) Made a knot to the end of the thread tied to the clew container.
- 3) Open the thread over the knot and insert into the cords the new clew thread for about 1/2 meter.
- 4) Untie the old thread from the small shaft of the winding-spools and pull it until the new thread comes over.
- 5) For the operators that sew with wax, adjust the stripper plug so that the thread will come slightly waxed.

b) PREPARATION OF THE WAX FOR THE SPOOL THREAD

This operation has to be made only using solid wax.

- 1) Take the solid wax to small pieces and put them into the pot N° A0125.
- 2) Switch on the switch "RISCALDAMENTO" and then the switch "CALDAIA", on the panel.

When liquid wax is used, don't switch on the above switches.

- 3) When the solid wax becomes liquid, it's possible to wind the spools.

c) THREADING OF MACHINE

To thread the machine see Fig. 3.

With the same procedure of the point a) the following steps have to be made:

- 1) Loosen the stripper plug N° A0128.
- 2) Loosen the tension wheel adjusting nut N° A0113 on the tension wheel N° A0110.

ATT.: The new thread has to be wrapped around the tension wheel 3 times.

- 3) Turn by-hand the hand-wheel gear N° A0107 until the lock lever plates N° 0119 and N° 0120 are disengaged.
- 4) Repeat the operation N° 2 of the point a)
- 5) Repeat the operation N° 3 of the point a)
- 6) Repeat the operation N° 4 of the point a)
- 7) Repeat the operation N° 5 of the point a)
- 8) Pull up the old thread on the horn in such a way that new thread covers all the steps till to the upper horn thread roll N° 548; cut off the knot and thread thru the small

hole in whirl N° 533 and up thru horn cup.

Retain the thread by the retaining clip.

- 9) Screw for about two turns the stripper plug.

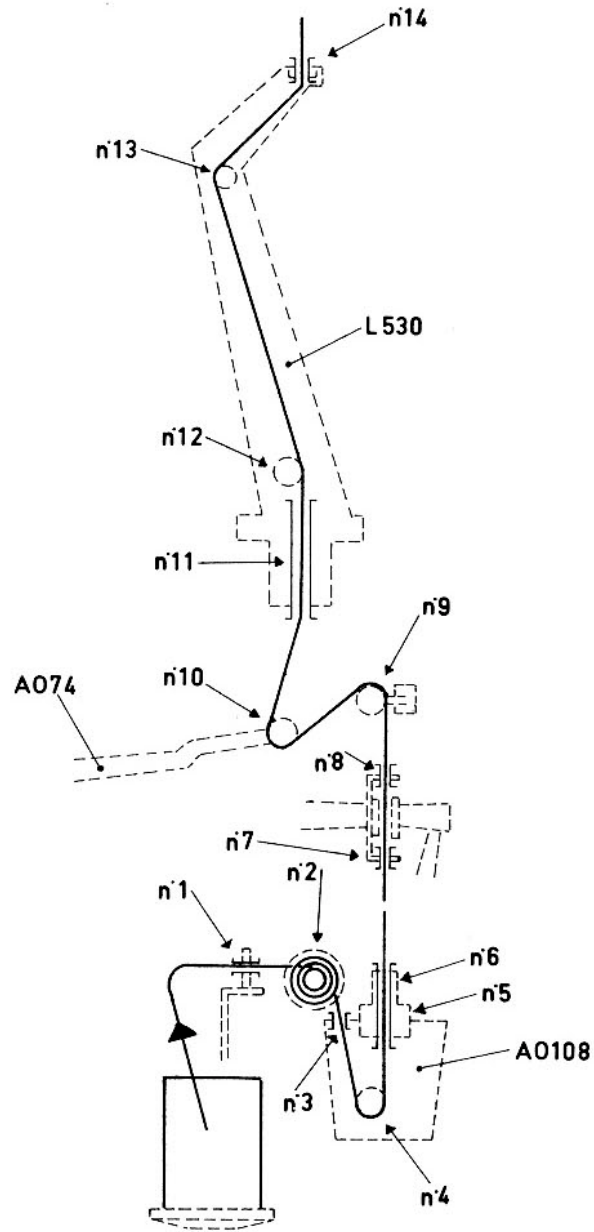


FIG.3-

d) PREPARATION OF THE THREAD FOR THE HORN

Prepare the mixture for the pot N° A0108.

Into another pot, mix water and emulsible oil - about 3% ratio (1 liter water, 3 spoons oil).

When the mixture is like milk, put on the pot N° A0108 till to filling it.

e) TO FILL THE SPOOLS

To put in operation the spools shaft N° A0103, pull up the winding-spool device N° A0102 and lock the lever N° A0100.

SEE FIG. 4

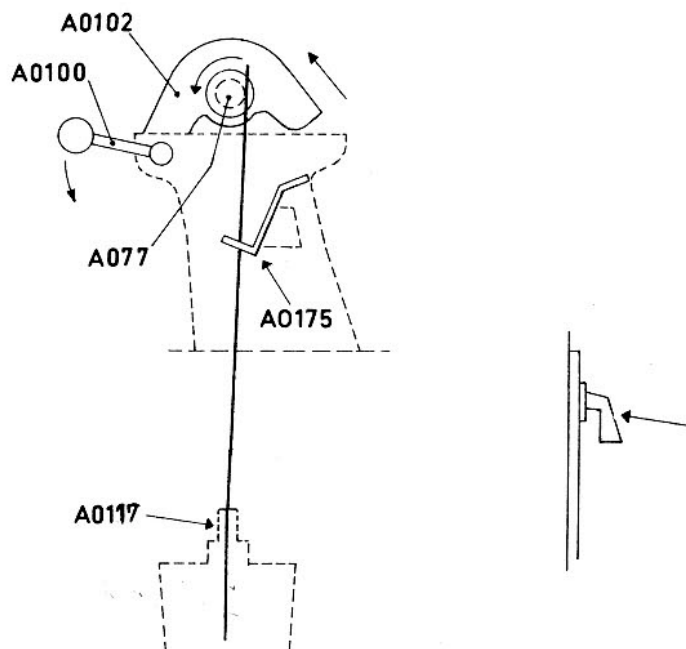


FIG.4-

- 1) Switch off the motor switch.
- 2) Insert the spools N° A077 and lock then with the knob N° A0104.

- 3) Be sure that thread passes thru the two pins of the direction lever N° A0175.
- 4) Wind two times the thread to the spool.
- 5) Switch on the motor switch; by moving from right to left and viceversa, the spool will wind.
- 6) To regulate the quantity of wax on the thread the stripper plug will be loosened or tightened if the wax on the thread is too little or too much.
- 7) When the spool is filled, pull down the winding device N° A0102.
- 8) Switch on the MAX position the spool switch; put on one spool on the spool holder behind the shuttle group. The spool is so heated for a good operation.

ATT.: For a good operation, it's necessary to switch on the heater switch (RISCALDAMENTO).

The MIN position of the heater switch is arranged in such a way that after MAX heating of the spool, this is kept to an appropriate temperature, ready to sew again.

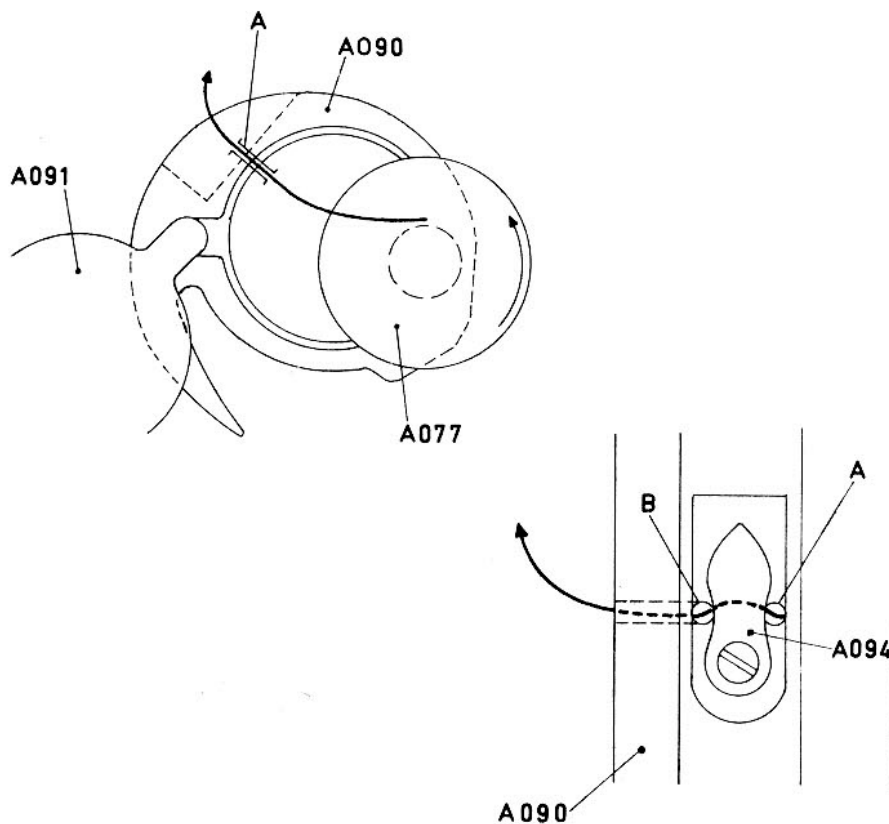
f) TO PUT A SPOOL INTO THE SHUTTLE

SEE FIG. 5

ATT.: Mechanical parts to be handled now are heated.

- 1) Turn by hand the hand-wheel as indicated by the arrow, until the shuttle N° A090 has turned completely towards the left and the loop opener N° A089 is out.
- 2) Loosen the nut N° A073.
- 3) Turn shuttle ring to the right and pull down on the ring.
- 4) Take off the shuttle from the ring.
- 5) Press with a screwdriver the screw N° A092 on the shuttle and move sideways the cover N° A091.
- 6) Insert the thread into the hole A of the shuttle.
- 7) Insert the spool in such a way that pulling the thread, the spool turns counterclockwise. Cover the shuttle with the cover N° A091.
- 8) Wind the thread around the clip N° A094 and pass it under this clip; insert the thread into the hole B.

ATT.: Before to insert the spool into the shuttle lubricate with little oil.

**FIG.5-**

USE OF THE MACHINE

g) TO START SEWING

After the described steps of preparation it's possible to start sewing with the following rules:

- 1) The horn thread has to be more than 10 cm. about over the horn retainer clip N° 532.
- 2) The spool thread has to be about 10 cm. over the shuttle.
- 3) The horn tip has to be directed to the right.
- 4) To sew with the horn tip directed to the left, the upper thread has to be passed under the horn and fixed under the clip N° 532.

To place the shoe in, pull up the presserfoot N° A065 by action of the lever N° A035 or of the pedal N° A0183.

Put the shoe on the horn and lower the presserfoot.

Start sewing by action of the motor clutch pedal N° A0182; take care of the position of the presserfoot into the channel rather than of the needle.

When the sewing is finished, cut the shuttle thread, lift the presserfoot as above indicated, slip off the shoe and cut the horn thread inside the shoe.

h) TO ADJUST STITCH LENGTH

Turn knob N° A034, located on top left hand side of head, back for longer stitch and forward for shorter stitch.

SEE FIG. 11

i) ADJUSTMENT OF PRESSERFOOT

Based to the thickness to be sewed, lift or lower the presserfoot N° A065 as follow:

- 1) Loosen the locking screw N° A064 and slide up or down the presserfoot on the presserfoot bar N° A049.
- 2) The presserfoot adjusted, tighten the screw.

SEE FIG. 11

l) ADJUSTMENT OF PRESSERFOOT PRESSURE ON SHOE

In case that the presserfoot pushes too much on the shoe, loosen the knob N° A055A.

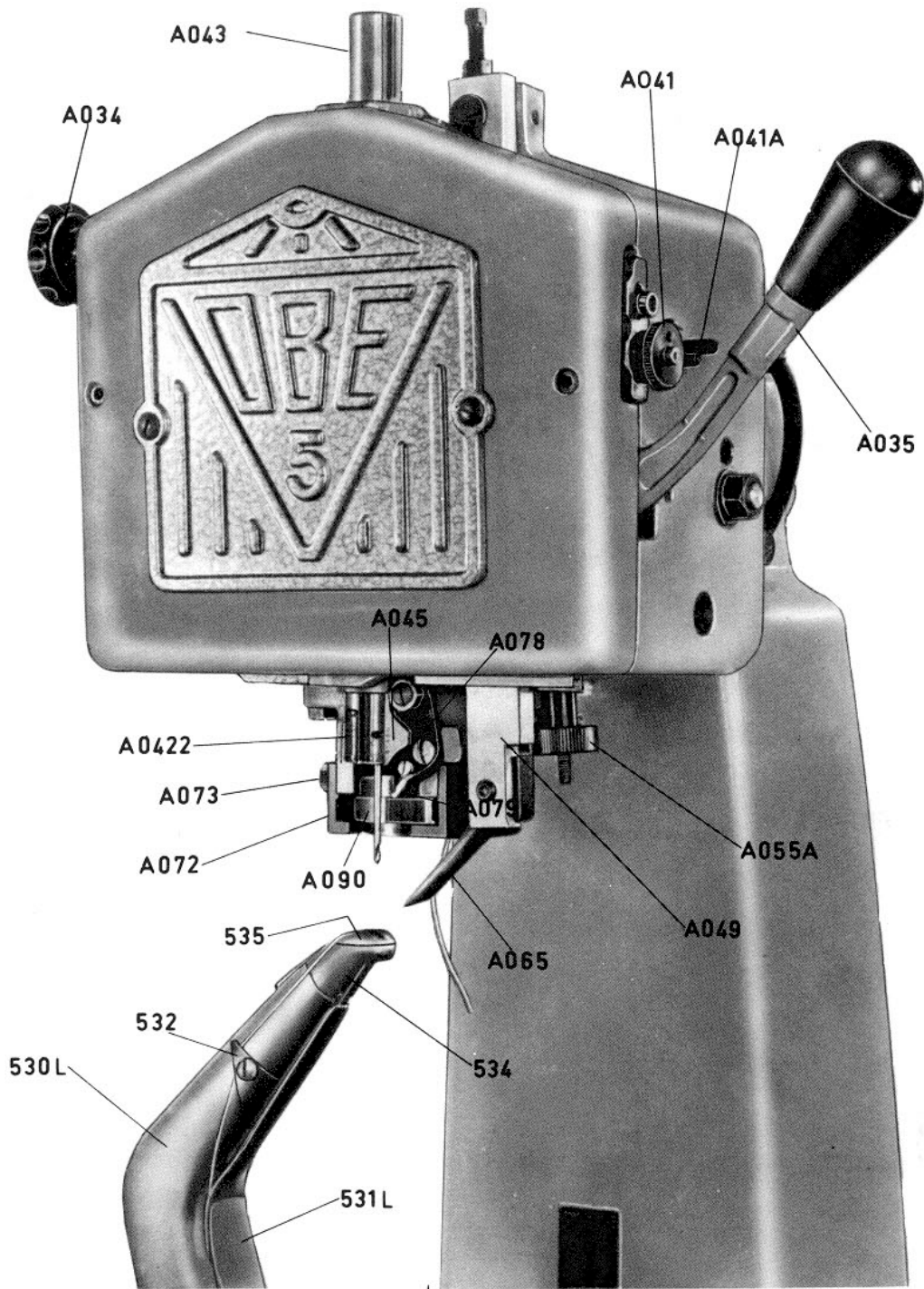
SEE FIG. 11

m) ADJUSTMENT OF TENSION STITCH

To stretch the stitch, turn to right the adjusting nut N° A0113.

SEE FIG. 12A

FIG. 11



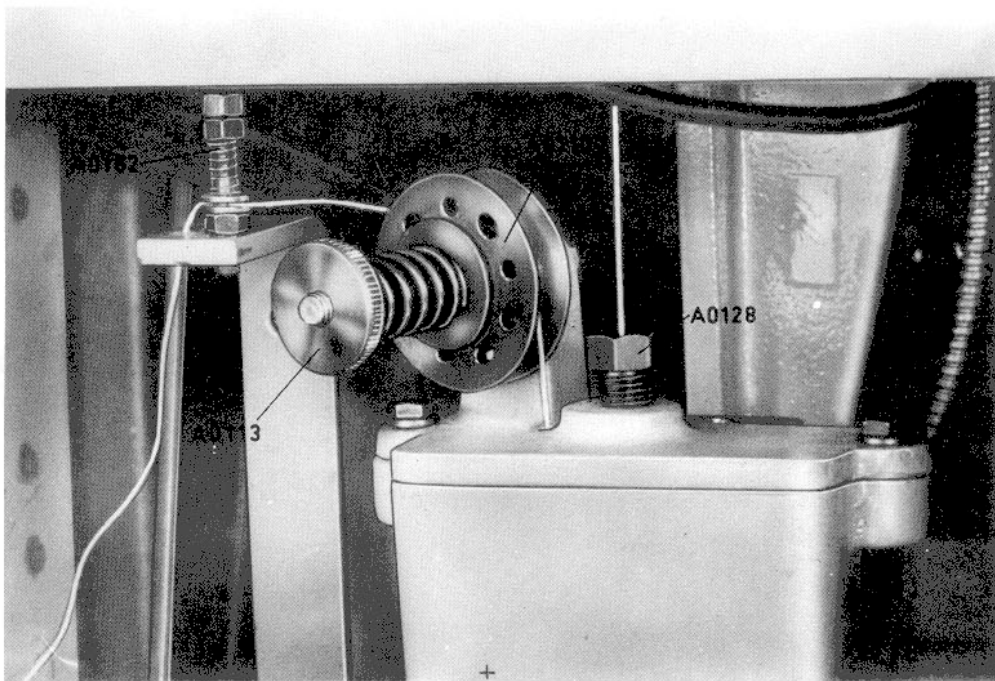


FIG. 12A

n) ADJUSTMENT OF THREAD LOCKING DEVICE

When a thread with a different number of cords is used, it's necessary to adjust the thread locking device, by the following steps:

- 1) Turn by hand the hand-wheel as indicated by the arrow till the two lock plates N° 0119 and N° 0120 lock the thread.
- 2) Loosen the nut K of the right plate N° 0119.
- 3) Screw this plate by a needle into one of holes G till the thread slides quite forced.
- 4) Tighten the plate nut.

SEE FIG. 12B

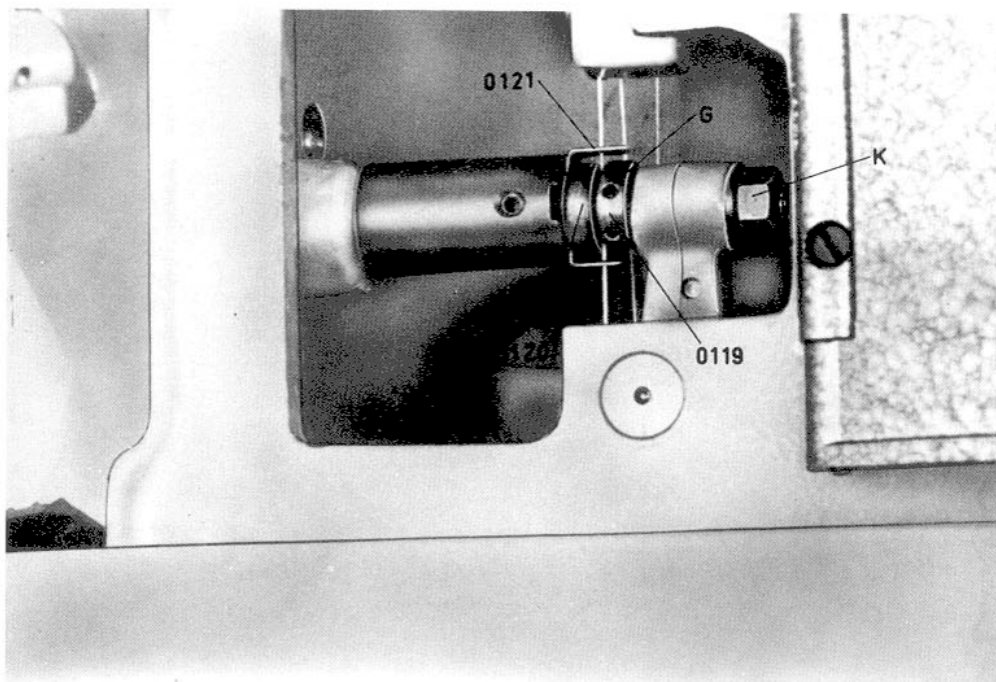


FIG. 12B

o) RUNNING DEFECTS

Thread breaking

- 1) - Poor quality thread or wrong cord twist on thread.
- 2) Tension too high: loosen the nut N° A0113 of the thread brake device.
- 3) The plates N° 0119 and N° 0120 lock completely the thread: adjust following the point n).
- 4) Defective needle or of wrong size for thread.
- 5) Thread stranded.
- 6) Small hole on the whirl N° 533 damaged or sharpened.
- 7) Horn cup N° 533 scratched: eliminate by emery cloth.

Lacking of stitches or irregular

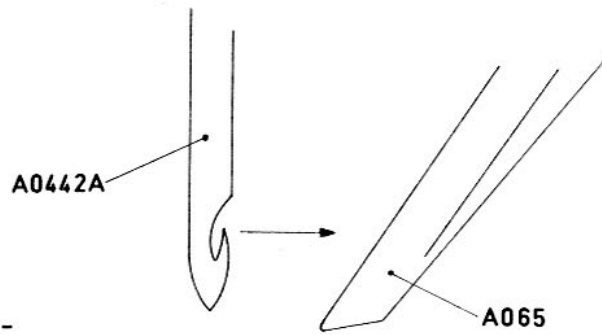
- 1) Needle in wrong position.
- 2) Whirl out of time or not turning.
- 3) Loop opener N° A089 not working exactly.
- 4) Breaking of shuttle thread.
- 5) Shoe badly kept by the operator or extraneous substances in the inside of shoe that could deviate the needle.

p) REPLACEMENT OF SPARE PARTS

Needle

- 1) Turn by hand the hand-wheel as indicated by arrow, lowering the needle bar N° A043.
- 2) Loosen the screw of needle clamp N° A0442.
- 3) Put the new needle in the clamp as far as it will go, with the barb to the right.
- 4) Tighten the needle clamp screw.

SEE FIG. 6

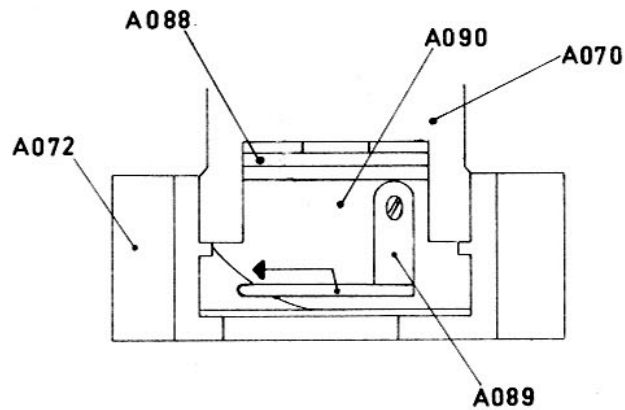


FIG_6-

Whirl

- 1) Turn the hand-wheel till to have the tip of the loop opener A089 completely towards the left.

SEE FIG. 7



FIG_7-

- 2) Remove the horn cap N° 535, loosen the horn tip N° 534 screw and withdraw 5 mm. about the horn tip from the horn.
- 3) Remove the defective whirl, place the new one with small hole F. 533 directed to the right.

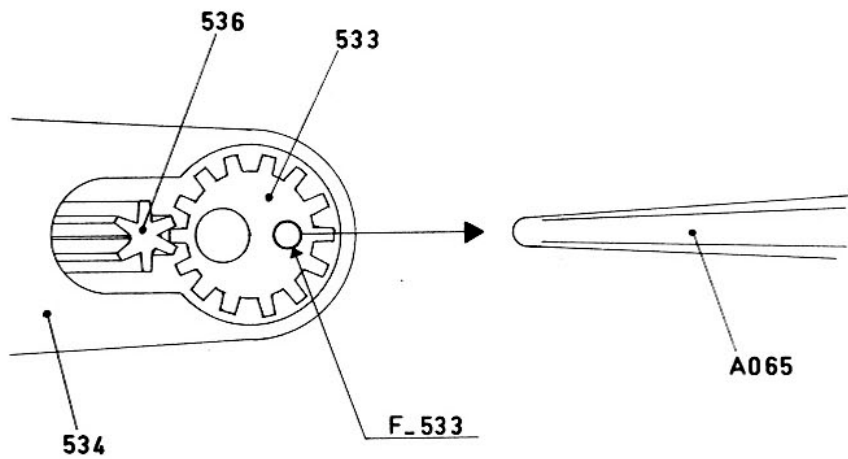
SEE FIG. 8

- 4) Push the horn tip till to mesh the whirl and the pinion.
- 5) By hand turning the hand-wheel, be sure that the whirl kind the thread to the needle barb.
- 6) Replace the horn cap putting the short screw on top and long screw on bottom of cap.

Pinion

- 1) Remove the horn cap, the whirl and the defective pinion N° 536. Put in the new one and by turning slowly the horn, push the pinion into the gain.
- 2) Reassemble the horn tip and caps.
- 3) To adjust the pinion, remove the screw on plate N° 538 in the bend of horn.
- 4) Turn the screw N° 540 located in the center of upper gear, to the right to raise the pinion and to the left to lower the pinion.

SEE FIG. 8



FIG_8-

q) TO TIGHTEN THE MOTOR BELT

Once a six months period, at least, check the tension of motor belt.

To adjust the tension, take the cover away from behind the base, loosen the screw D between the sector N° A0177 and the motor bracket S; push this bracket and tighten the screw D.

SEE FIG. 9

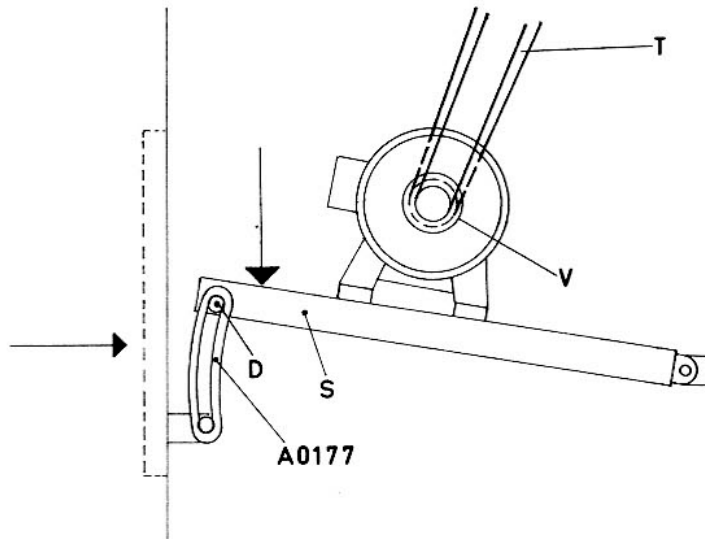


FIG. 9

r) LUBRICATION

ATT.: The lubrication is decisive for the long life of mechanical parts.

Lubrication points are well indicated by red paint.

USE FLUID OIL

Fill with grease the points with grease nipple.

USE GREASE FOR MOTOR CAR.

s) CLEANING

For the good machine operation, it's advisable to clean with gasoline or solvent, the parts where the horn thread slides and where the whirl turns into the horn tip.

ELECTRIC PANEL

SEE FIG. 10

- L. LINE
- A. MOTOR SWITCH
- B. INTERNAL LIGHT SWITCH
- C. HEATER SWITCH
- D. SHUTTLE HEATER SWITCH
- E. POT HEATER SWITCH
- 1. WARNING LIGHT
- 2. HEATER WARNING LIGHT
- 3. POT WARNING LIGHT
- R1. SHUTTLE HEATER RESISTANCE
- R2. POT HEATER RESISTANCE

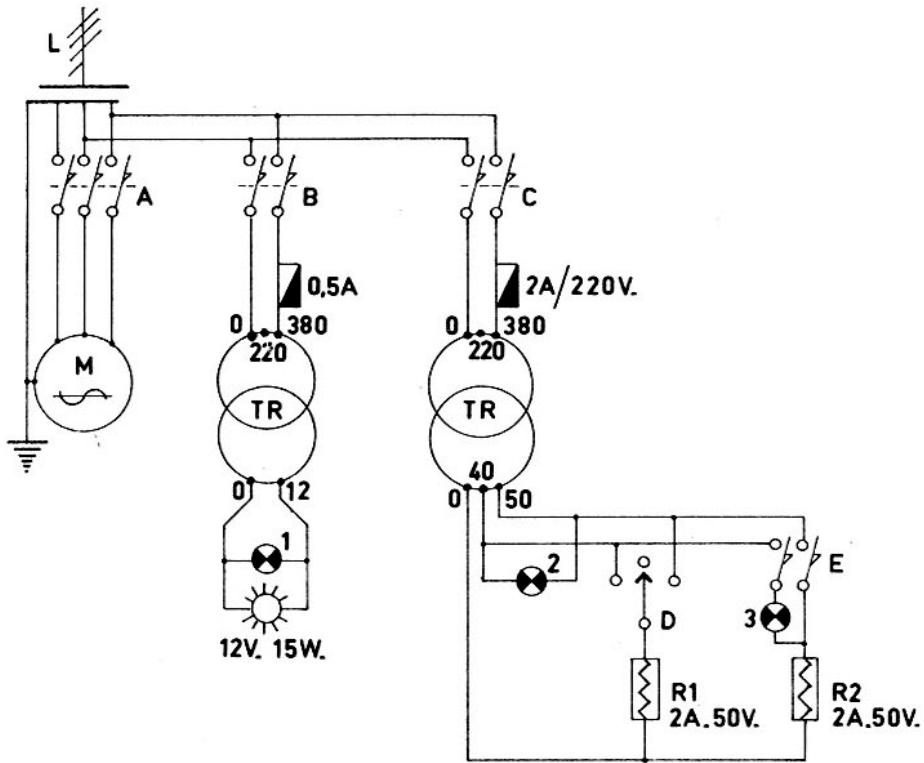


FIG. 10-

V = Screw
Sc = Conic pin

D = Nut
M = Spring

TABLE N. 1

A	01L	Base	A	039	Presserfoot lift adjusting block - 1 V.
A	02L	Column	A	0438	Adjusting hold down pin
A	03	Head	A	041	Adjusting hold down pin knob
A	04	Head cover	A	042	Adjusting hold down pin spring
A	05	Set cams - 2 V.	A	043	Needle bar
A	06	Cam shaft	A	0442	Needle clamp - 1 V.
A	07	Gear - 2 V.	A	045	Thread lifting cam - 2 plugs
A	08	Shuttle cam lever pivot pin	A	046	Needle cam - 2 V.
A	09	Needle cam roll stud - 1 D	A	047	Needle cam roll
A	010	Cam pin	A	048	Presserfoot bar spring connecting pin
A	011	Presserfoot cam lever spring	A	049	Presserfoot bar
A	012	Shuttle cam lever	A	050	Presserfoot bar retaining plate - 2 V.
A	013	Shuttle cam lever roll stud	A	051	Feed cam lever connecting arm stud - 1 D
A	014	Shuttle cam lever roll	A	052	Presserfoot adjusting screw
A	015	Feed cam lever	A	053	Presserfoot lift rack - 2 V.
A	016	Presserfoot cam lever	A	054	Lift hold down rack - 2 V.
A	017	Shuttle cam lever block	A	055	Presserfoot bar spring
A	018	Feed cam lever spring connecting stud	A	056	Feed lever spring
A	019	Feed cam lever roll stud	A	057	Presserfoot bar holding pin
A	020	Feed cam lever roll	A	058L	Cam shaft
A	021	Presserfoot cam lever pivot stud	A	059	Cam shaft adjusting collar - 1 V.
A	022	Presserfoot cam roll	A	060	Gear - 2 V.
A	023	Presserfoot cam roll stud	A	061	Take up cam
A	024	Presserfoot lifting dog pivot stud - 1 V.	A	062L	Gear - Z 30
A	025	Presserfoot lifting dog	A	063	Presserfoot bar spring stud
A	026	Presserfoot lifting dog retaining collar - 1 V.	A	0701	Fixed stud presserfoot lifting lever
A	027	Retaining collar spring	A	0430	Bronze bushing for needle bar (upper)
A	028	Retaining lever spring connecting pin	A	0431	Bronze bushing for needle bar (lower)
A	029	Rack guide	A	0436	Lifting dog lever
A	030	Support for shuttle cam lever pivot pin - 2 V.	A	0437	Lifting dog lever spring
A	031	Shuttle drive rack			
A	032	Feed cam lever connecting arm			
A	033	Pivot stud for A032			
A	034	Stitch length adjusting screws - 1 D			
A	035	Presserfoot lifting lever			
A	036	Presserfoot pivot cable stud			
A	037	Presserfoot lifting lever spring			
A	038	Presserfoot hold down block - 2 V.			

TABLE N. 1

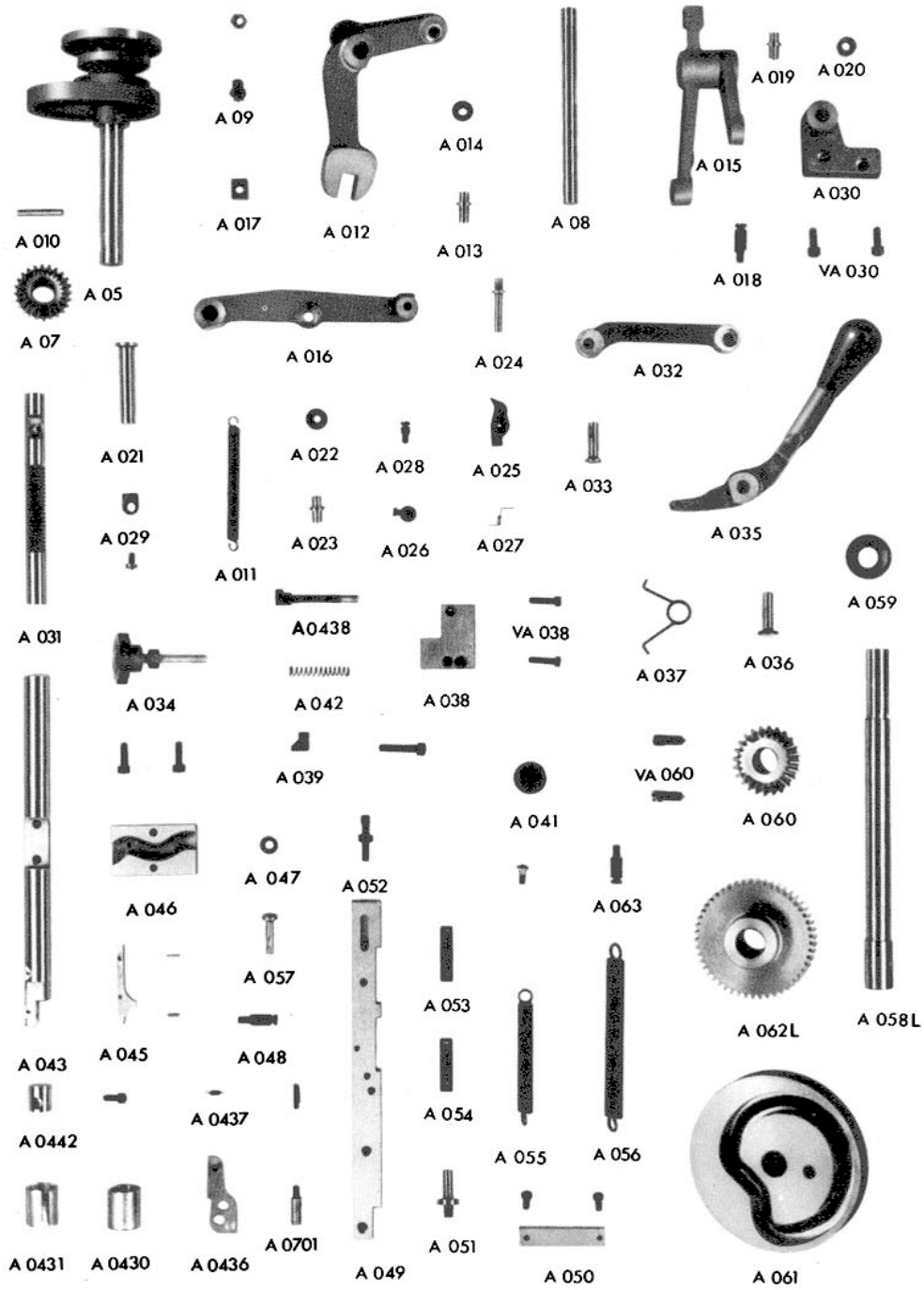


TABLE N. 2

A	070	Shuttle head - 2 V.	A	0115	Tension wheel washer square hole
A	071	Shuttle electrical heater	A	0116	Tension wheel friction washer
A	072	Shuttle ring - 3 plugs	A	0117	Stripper plug
A	073	Shuttle ring retaining nut	A	0118	Rubber stripper
A	074	Take up lever	A	0119L	Vertical shaft
A	075	Take up cam roll stud - 1 D	A	0120	Upper gear
A	076	Take up cam roll	A	0121	Lower gear
A	077	Bobbin	A	0125	Wax heater pot
A	078	Thread lifting lever - 1 V.	A	0126	Stripper plug support
A	079	Thread lifting finger - 1 V.	A	0127	Thread keeper
A	080	Lifting lever roll stud	A	0128	Stripper plug
A	081	Lifting lever spring	A	0129L	Felt stripper
A	082	Lifting lever roll	A	0130L	Guide-thread spring
A	083	Take up thread roll stud	A	0131L	Guide-thread stud - 2 D.
A	084	Take up thread roll	A	0132L	Guide-thread spring
A	085	Take up thread roll guard	A	0133L	Wax pot thread roll guard
A	086	Hand wheel pivot pin	A	0134L	Wax pot thread roll
A	087	Shuttle driver gear	A	0135	Wax pot thread roll stud
A	088	Shuttle driver - 1 V.			
A	089	Loop opener			
A	090	Shuttle			
A	091	Bobbin keeper			
A	092	Bobbin keeper stud			
A	093	Bobbin keeper spring			
A	094	Bobbin tension plate			
A	095	Bobbin tension spring - 1 V.			
A	096	Grase fitting			
A	097	Handwheel retaining collar			
A	099	Pulley for winding the spool			
A	0100	Handle to block the winding-spool			
A	0102	Winding-spool			
A	0103	Small shaft winding-spool			
A	0104	Shagreened knob			
A	0105L	Shaft for lever pull			
A	0106	Fixing ring			
A	0107	Handwheel gear			
AB	0107	Handwheel with gear			
A	0108	Wax pot - 2 V.			
A	0109	Wax pot lid			
A	0110	Tension wheel			
A	0111	Tension wheel stud			
A	0112	Tension wheel spring			
A	0113	Tension wheel adjusting nut			
A	0114	Tension wheel washer			

TABLE N. 2

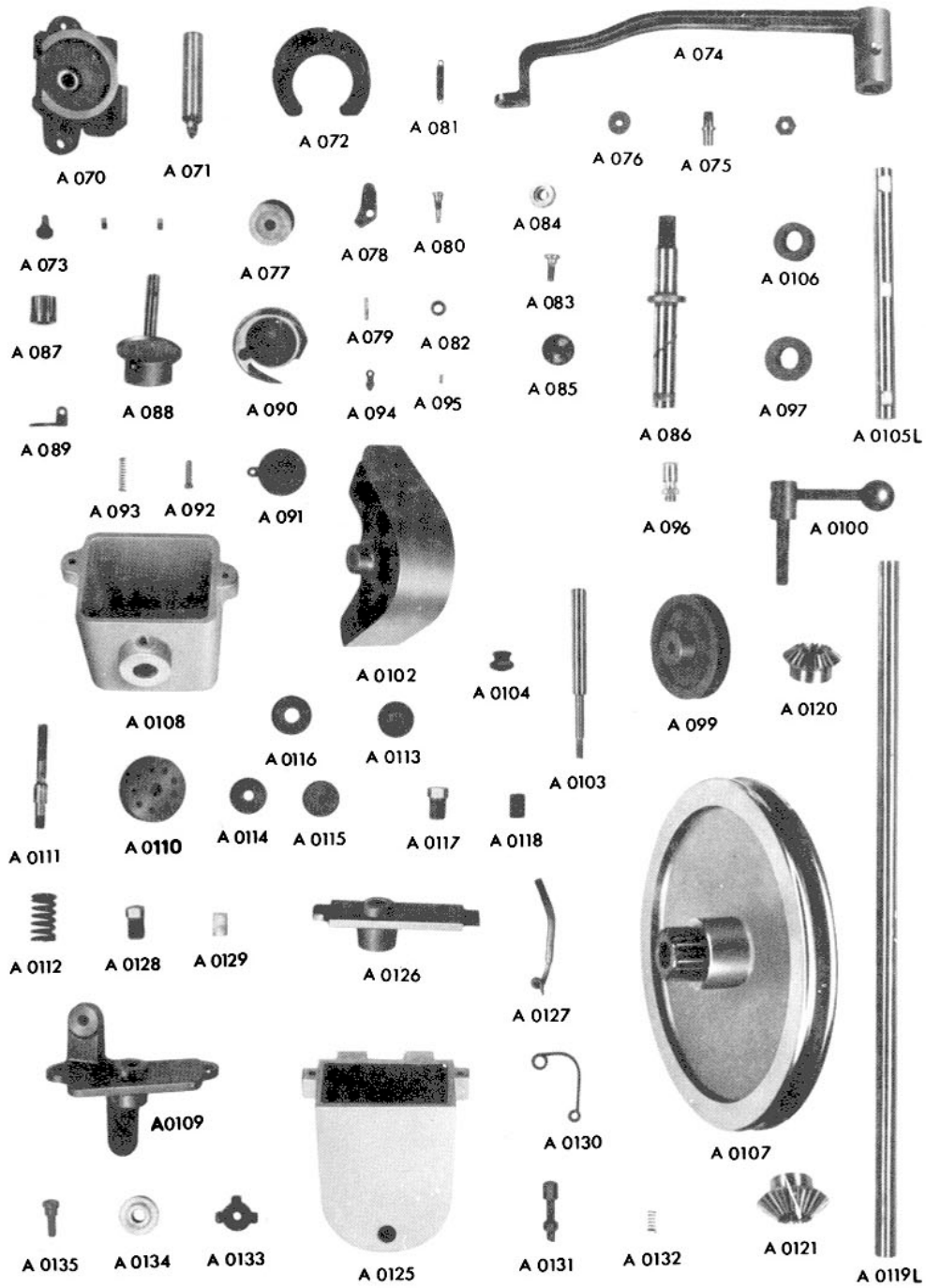
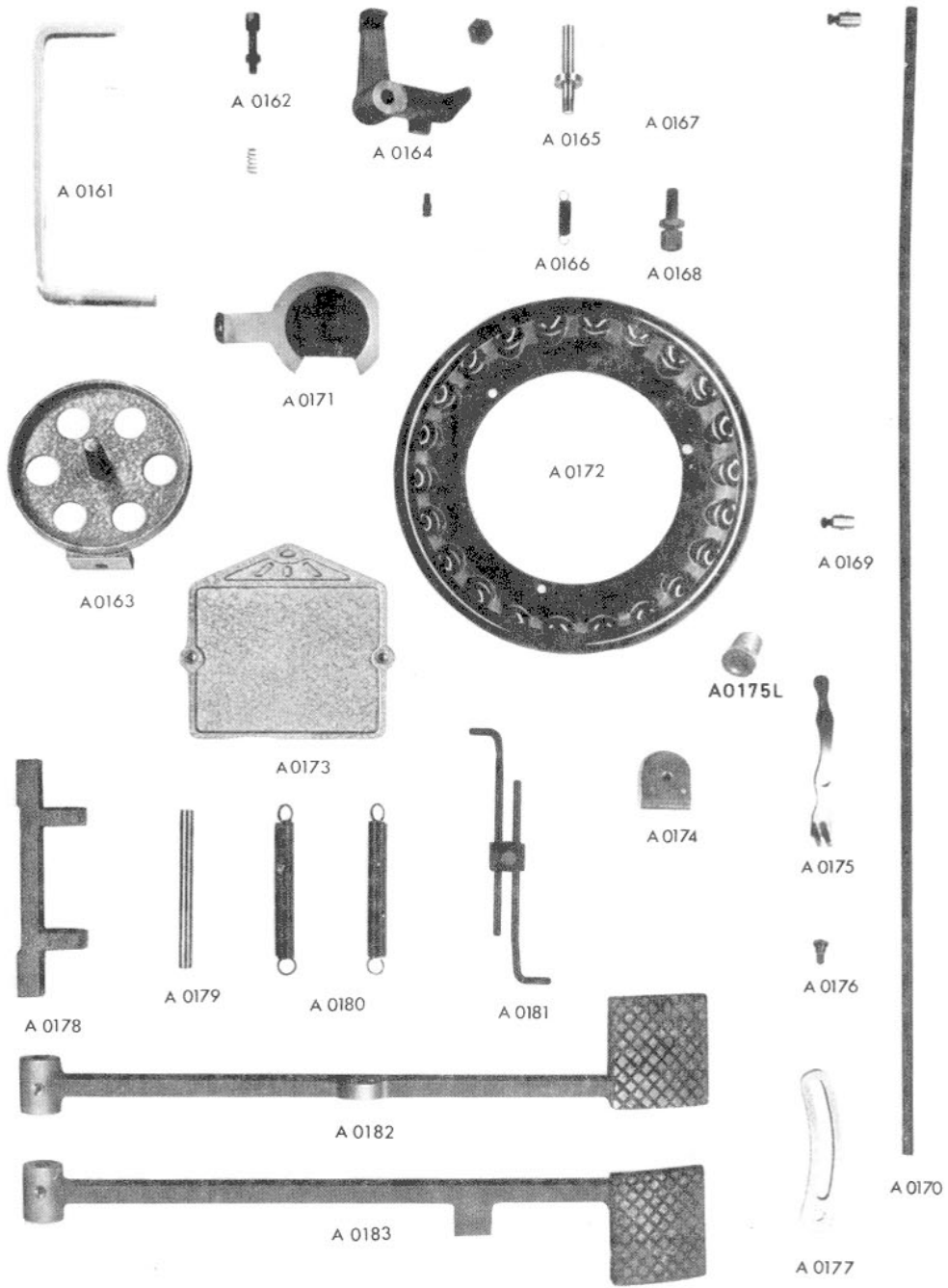
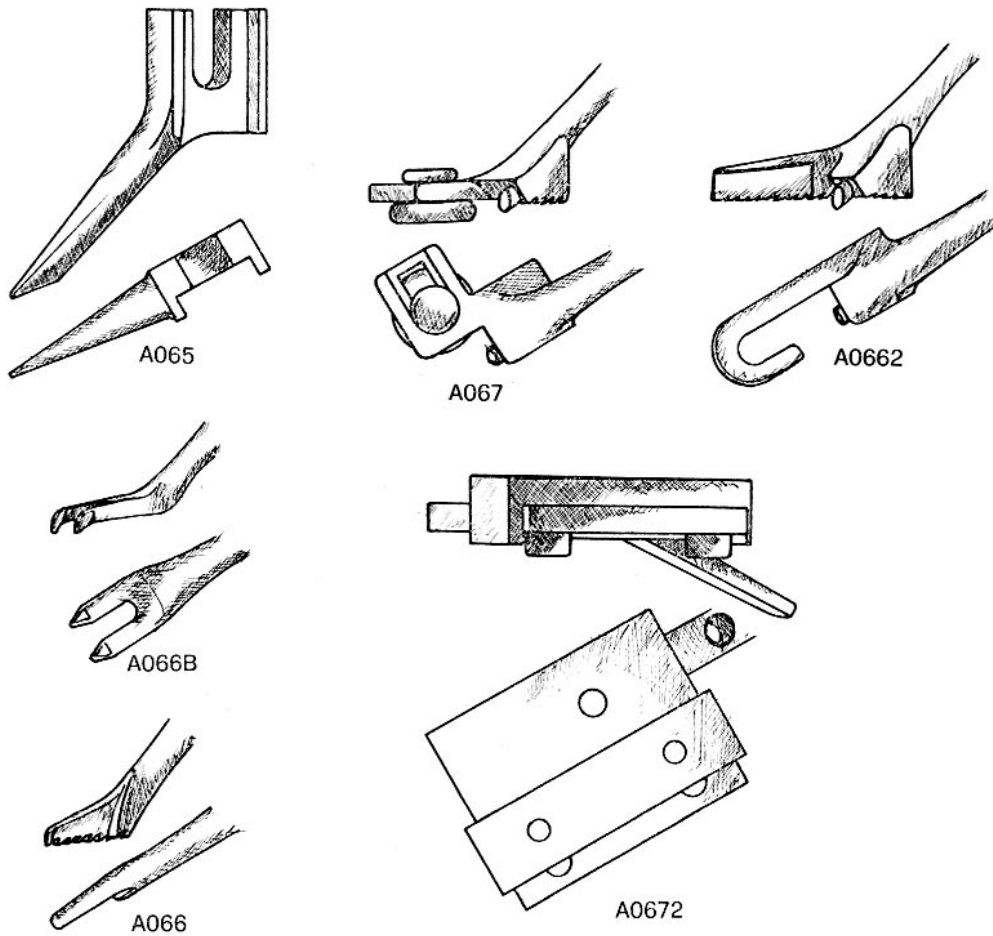


TABLE N. 4

A	0161	Clew container support
A	0162	Thread tightener set - 1 M
A	0163	Thread horn clew container
A	0164	Presserfoot lifting lever by pedal
A	0165	Presserfoot lifting lever stud
A	0166	Presserfoot lifting lever spring
A	0168	Tighten wire screw
A	0169L	Presserfoot lifting wire
A	0170L	Wire sheath
A	0171	Take up lever protection
A	0172	Hand-wheel
A	0173	Head cover
A	0174	Shuttle thread lever support
A	0175	Shuttle thread guide lever
A	0175L	Shuttle thread guide bushing
A	0176	Guide lever pin
A	0177	Belts tighten sector
A	0178	Pedals support
A	0179	Pedals stud
A	0180	Pair of pedal spring
A	0181	Pedals connecting rod - 1 clamp
A	0182	Motor pedal
A	0183	Presserfoot lifting pedal
A	0200	Electric panel
A	0201	Motor belt

TABLE N. 4





PRESSERFEET AND SPECIAL GUIDE LIST

For every work requirement, five presserfeet have been studied and realized.

- A065 - Pointed presserfoot for leather and rubber soles with channel.
- A066 - Shoe type presserfoot for leather and rubber soles.
- A066B - Double pointed presserfoot for soft leather, rubber or other material soles.
- A067 - Presserfoot with guide roll for rubber soles. For sewing at an uniform distance from the sole board.
- A0662 - Special presserfoot to sew on the board of the box type soles.
- A0672 - Special guide to sew the welt on the sole,