

S755 (G2) / S755 XL (G2) FINISHER



Operator Manual



Manufactured by

800 rue Rossiter, Saint-Jean-sur-Richelieu (QC) Canada J3B 8J1
www.landisinternational.ca info@landisinternational.ca
T.(450)359-8800 TF. 1-800-634-0806 F. (450) 359-9619

INTRODUCTION

Landis Finisher S755 (G2) / S755 XL (G2) is a compact, durable machine designed for fast, complete finishing work. It will deliver efficient, dependable service when used correctly and with care. As with any piece of specialized equipment, for best performance the manufacturer's instructions must be followed.

BEFORE USING THE LANDIS FINISHER, READ OPERATING INSTRUCTIONS MANUAL

1. KEEP GUARDS IN PLACE and in working order.
2. Always DISCONNECT ELECTRICAL SOURCE before adjustments or servicing the machine.
3. REMOVE ADJUSTING KEYS AND WRENCHES. Form habit of checking to see that keys and adjusting wrenches are removed from tool before turning it on.
4. KEEP WORK AREA CLEAN. Cluttered areas and benches invite accidents.
5. DON'T USE IN DANGEROUS ENVIRONMENT. Don't use power tools in damp or wet locations, or expose them to rain. Keep work area well lighted.
6. KEEP CHILDREN AWAY. All visitors should be kept safe distance from work area.
7. MAKE WORKSHOP KID PROOF with padlocks, master switches, or by removing starter keys.
8. DON'T FORCE TOOL. It will do the job better and safer at the rate for which it was designed.
9. USE RIGHT TOOL. Don't force tool or attachment to do a job for which it was not designed.
10. DO NOT USE EXTENSION CORD.
11. WEAR PROPER APPAREL. Do not wear loose clothing, gloves, neckties, rings, bracelets, or other jewellery which may get caught in moving parts. Nonslip footwear is recommended. Wear protective hair covering to contain long hair.
12. ALWAYS USE SAFETY GLASSES. Also use face or dust mask if cutting operation is dusty. Everyday eyeglasses only have impact resistant lenses, they are NOT safety glasses.
13. SECURE WORK. Use clamps or a vise to hold work when practical. It's safer than using your hand and it frees both hands to operate tool.
14. Make sure machine is PROPERLY GROUNDED.
15. DON'T OVERREACH. Keep proper footing and balance at all times.
16. MAINTAIN TOOLS WITH CARE. Keep tools sharp and clean for best and safest performance. Follow instructions for lubricating and changing accessories.
17. DISCONNECT TOOLS before servicing; when changing accessories, such as blades, bits, cutters, and the like.
18. REDUCE THE RISK OF UNINTENTIONAL STARTING. Make sure switch is in off position before plugging in.
19. USE RECOMMENDED ACCESSORIES. Consult the owner's manual for recommended accessories. The use of improper accessories may cause risk of injury to persons.
20. NEVER STAND ON TOOL. Serious injury could occur if the tool is tipped or if the cutting tool is unintentionally contacted.
21. CHECK DAMAGED PARTS. Before further use of the tool, a guard or other part that is damaged should be carefully checked to determine that it will operate properly and perform its intended function -- check for alignment of moving parts, binding of moving parts, breakage of parts, mounting, and any other conditions that may affect its operation. A guard or other part that is damaged should be properly repaired or replaced.
22. DIRECTION OF FEED. Feed work into a blade or cutter against the direction of rotation of the blade or cutter only.
23. NEVER LEAVE TOOL RUNNING UNATTENDED. TURN POWER OFF. Don't leave tool until it comes to a complete stop.
24. Dust generated is FLAMMABLE – DO NOT SMOKE when using Finisher.
25. Keep generators and covers IN PLACE and in proper working order.
26. Observe all SAFETY WARNINGS on the machine and in this manual.

OPERATING THE LANDIS FINISHER S755 (G2) / S755 XL (G2)



RISK OF INJURY

- DISCONNECT TOOLS BEFORE SERVICING AND LOCK THE SWITCHES.
- EYE PROTECTION SHOULD ALWAYS BE WORN BY THE OPERATOR AND OTHERS IN THE WORK AREA WHEN THE SANDER IS IN USE.
- EYE PROTECTION IS REQUIRED FOR PROTECTION FROM FLYING DEBRIS AND DUST, WHICH COULD CAUSE EYE INJURY.
- AVOID KICK BACK BY SANDING IN ACCORDANCE WITH THE DIRECTIONAL ARROWS.
- CLOSE SANDING DOORS BELT BEFORE OPERATING THE MACHINE.
- CLOSE THE MAIN ACCESS DOOR AND FAN COVER BEFORE OPERATING THE MACHINE.

INSTALLATION

The S755 (G2) / S755 XL (G2) Landis Finisher should be located on a flat, firm surface, in an area free of obstructions that could interfere with the safe operation of the equipment. The finisher should be mounted on four wheels. In this way, the wheels are practical to clean and move the machine.



- ALL ELECTRICAL WORK MUST BE PERFORMED BY A QUALIFIED ELECTRICIAN AND MUST CONFORM TO ALL STATE AND LOCAL ORDINANCES.
- DO NOT, UNDER ANY CIRCUMSTANCE, TAMPER WITH, MODIFY, OR ADAPT THE ELECTRICAL PLUG AND CORD PROVIDED WITH THIS MACHINE.

ELECTRICAL CONNECTIONS

Electrical connection may be made by either plugging the provided electrical cord into an appropriately wired electrical socket, or by wiring the machine directly into an electrical disconnect box. **The customer must ensure that the voltage is 230 V.**



- IF THE ELECTRICAL CORD, PLUG OR WIRING SHOULD BECOME FRAYED OR DAMAGED, REPLACE IT AT ONCE. DO NOT ATTEMPT TO OPERATE THE MACHINE WITH FAULTY WIRING AS IT COULD RESULT IN SEVERE INJURY OR DEATH.

NOTE: REFER TO THE MACHINERY IDENTIFICATION PLATE TO DETERMINE THE ELECTRICAL SPECIFICATIONS OF THIS MACHINE IN RESPECT TO VOLTAGE, PHASE AND AMPERAGE REQUIREMENTS.

- DO NOT START FINISHER BEFORE CHECKING FOR PROPER SANDING BELT TRACKING.

ELECTRICAL CONTROL BOX

The electrical control box is in front of the machine. The motor is thermally protected. In case of overload, the relay will trip and shut the motor off. The overload on the motor must be reset after a short period of time (see page 25).



GROUNDING INSTRUCTIONS

In the event of a malfunction or breakdown, grounding provides a path of least resistance for electric current to reduce the risk of electric shock. This tool is equipped with an electric cord having an equipment-grounding conductor and a grounding plug. The plug must be plugged into a matching outlet that is properly installed and grounded in accordance with all local codes and ordinances.

Do not modify the plug provided - if it will not fit the outlet, have the proper outlet installed by a qualified electrician.

Improper connection of the equipment-grounding conductor can result in a risk of electric shock. The conductor with insulation having an outer surface that is green with or without yellow stripes is the equipment-grounding conductor. If repair or replacement of the electric cord or plug is necessary, do not connect the equipment-grounding conductor to a live terminal.

Check with a qualified electrician or service personnel if the grounding instructions are not completely understood, or if in doubt as to whether the tool is properly grounded.

Use only 3-wire extension cords that have 3-prong grounding plugs, **A**, and 3-pole receptacles that accept the tool's plug, **B**.

Repair or replace damaged or worn cord immediately.



A

B

Make sure the tool is connected to an outlet having the same configuration as the plug. No adapter is available or should be used with this tool. If the tool must be reconnected for use on a different type of electric circuit, the reconnection should be made by qualified service personnel; and after reconnection, the tool should comply with all local codes and ordinances.

LOCKOUT PROCEDURES

PREPARATION

1. Notify all affected workers that a lockout is required and the reason for the lockout of the machine.



MACHINE OR EQUIPMENT SHUTDOWN AND ISOLATION

1. If the equipment is operating, shut it down by the normal stopping procedure (turn off the main switch). We recommend to install a padlock to the Electrical control panel.
2. Disconnect the electrical plug from the electrical source.

APPLICATION OF LOCKOUT / TAGOUT

1. Lock out and tag the switch with an assigned, individual lock. A worker will not be protected unless he/she uses his/her own padlock.
2. If more than one worker is working on the same piece of equipment at the same time, each one should lock out the equipment, by placing a personal lock and tag on the group lockout device when he/she begins work, and should remove those devices when he/she stops working on the machine or equipment.
3. Locks and tags should clearly show the name of the person who applied the device, the date, and the reason for the lockout. This identifies who is servicing the machinery or equipment. In a multiple lockout/tagout situation, it will also identify any worker(s) who may not have finished working.
4. Locks and tags must be durable enough to withstand the environment in which they are to be used. Information on the locks and tags should remain legible.
5. Locks must be substantial enough to prevent removal without the use of excessive force. Tags must be substantial enough to prevent accidental or inadvertent removal.
6. Both locks and tags are to be standardized by color, shape, or size. Tags should be easily recognized and provide appropriate information about the lockout.

RELEASE FROM LOCKOUT / TAGOUT

1. Before locks and tags are removed and electricity is restored to the machine, inspect the work area to ensure that non-essential items have been removed and that machine components are operationally intact.
2. Ensure workers are a safe distance from any potential hazard.
3. The lock and tag should be removed from each energy-isolating device by the worker who applied the lock and tag.
4. Notify affected workers that locks and tags have been removed.

START-UP



Power Switch



Emergency Button



Trimmer



Sanding Belt



Blower



Brushes



- **EYE PROTECTION SHOULD ALWAYS BE WORN BY THE OPERATOR AND OTHERS IN THE WORK AREA WHEN SETTING UP THE MACHINE. EYE PROTECTION IS REQUIRED FOR PROTECTION FROM FLYING DEBRIS AND DUST, WHICH COULD CAUSE EYE INJURY.**

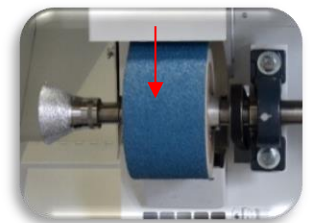
Before shipment, your Landis Finisher S755 (G2) / S755 XL (G2) was checked at the factory for proper adjustment and operation. However, due to the possibility of jarring or damage during handling and shipping, it is necessary to check that the machine is in proper working order before use.



- **BEFORE INITIAL START UP, TURN SANDING BELTS BY HAND TO ENSURE THAT ALL PARTS ARE FREE. DO NOT START FINISHER BEFORE CHECKING FOR PROPER SANDING BELT TRACKING.**

BEFORE CONNECTION TO AN ELECTRICAL POWER SUPPLY

1. Check that the main switch is off.
2. Rotate the sanding belts to see that all parts are free and not binding. Continue for one complete rotation of the sanding belt, checking both belts for tears or other damage. You can tell that one complete revolution has been made when the joint of the sanding belt has gone by the front pulley twice.
3. Rotate the trimmer section by moving the sole trimmer guard and turning the feather edge back guard by hand. Make sure the guards according to the position of the knife. Manual adjustment procedure page 11.



4. Rotate the Naumkeag head by hand to see that the sanding pad is not damaged and the shaft is not bent.



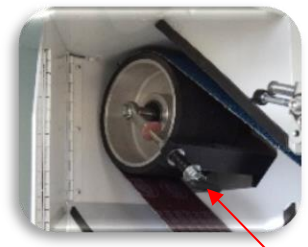
- AS WITH ANY PIECE OF ELECTRICAL EQUIPMENT, THERE IS AN EVER PRESENT HAZARD OF ELECTRICAL SHOCK WHEN OPERATING OR TOUCHING THE FINISHER. ENSURE THE MACHINE IS PROPERLY GROUNDED AT ALL TIMES.
- DO NOT FORCE THE EQUIPMENT. IT WILL DO THE JOB BETTER AND SAFER AT THE RATE FOR WHICH IT WAS DESIGNED.

BEFORE STARTING THE SANDING BELT MOTOR, CHECK THAT THE SANDING BELT IS TRACKING PROPERLY, AS FOLLOWS

1. “Jog” the sanding belt motor by quickly hitting the “start” then “stop” button such that the belt turn slowly, then stop.
2. Continue jogging the motor and check the belt to see that it stays roughly centered on its forward pulley.



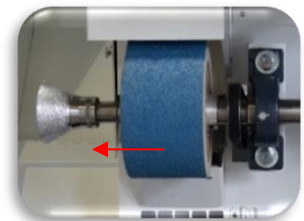
3. **Tracking adjustment** handle is located to the left of the sanding belt:



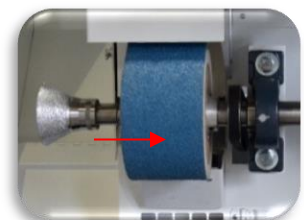
Tracking adjustment

- A. Clockwise rotation of the adjustment moves the belt to the left
- B. Counterclockwise rotation moves the belt to the right. Adjust accordingly as required so that the belt is tracking properly while running slowly.

4. Start completely the sanding motor. Fine adjust the tracking of the belt at full speed.



A



B



- AS THE INDIVIDUAL SANDING BELTS WEAR FROM USE, IT WILL BECOME NECESSARY TO MAKE MINOR TRACKING ADJUSTMENTS TO KEEP THE SANDING BELTS CENTERED.

INSTRUCTION FOR SANDING BELT

1. While grinding be careful that you avoid any contact to the parallel moving band. An injury of your hand or a damage of the material can result.
2. After working with the sanding belt it must be switched off immediately.
3. Before starting the sanding belts check in any case:
 - Are sanding belts strained?
 - Is the dust suction switched one?
 - Is the respective suction vent open?

To have a efficient dust suction, keep open the appropriate vent.

For sanding metal, keep the vent close and do not use the dust suction.

Although the filter materials is fire proof impregnated the flying sparks could result in fire!

SANDING BELT REPLACEMENT



- **EYE PROTECTION SHOULD ALWAYS BE WORN BY THE OPERATOR AND OTHERS IN THE WORK AREA WHEN CHANGING SANDING BELT. EYE PROTECTION IS REQUIRED FOR PROTECTION FROM FLYING DEBRIS AND DUST, WHICH COULD CAUSE EYE INJURY.**

Sanding belts are easily changed and are available upon request in various grits to better suit your needs and.

- Sanding belt 24 grit, SKU: 45924
- Sanding belt 40 grit, SKU: 45940
- Sanding belt 80 grit, SKU: 45980
- Sanding belt 100 grit, SKU: 459100
- Sanding belt 120 grit, SKU: 459120
- Sanding belt 150 grit, SKU: 459150

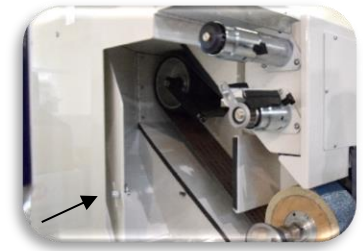


- **SOME SANDING BELTS ARE CONSTRUCTED TO ROTATE IN ONE DIRECTION ONLY. CHECK ARROW INSIDE SANDING BELT FOR ROTATION. INCORRECT INSTALLATION CAN CAUSE SUDDEN BELT FAILURE RESULTING IN SERIOUS INJURY TO OPERATOR AND OTHERS IN THE WORK AREA.**



TO REPLACE THE 4" WIDE SANDING BELT

1. Open sanding belt door.
2. Release pressure on the sanding belt by pulling the black arm on top of the machine.
3. Reach in access door and remove the far end of the belt of the idler first.
4. To install the new sanding belt, reverse the procedure described above, then readjust the tracking as described earlier in section "start-up".



- **DO NOT START FINISHER BEFORE CHECKING FOR PROPER SANDING BELT TRACKING.**
- **DO NOT OPERATE MACHINE WITH ACCESS DOOR OPEN.**
- **NEVER LEAVE MACHINE RUNNING WHILE UNATTENDED. TURN IT OFF.**
- **AS INDIVIDUAL SANDING BELTS WEAR FROM USE, IT WILL BECOME NECESSARY TO MAKE MINOR TRACKING ADJUSTMENTS TO KEEP SANDING BELTS CENTERED.**

TRIMMER SECTION

TO REMOVE THE SOLE CUTTER

1. You will need to use the lock tool at first to secure and lock the shaft. (SKU: TBSHC)
2. Remove the cutter retaining screw (left hand thread), (SKU: 83102220) and the washer (SKU: F33116).
3. Pull cutter off the shaft.
4. To reassemble, reverse procedures.

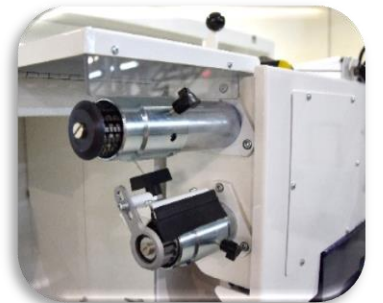


TO REMOVE THE HEEL CUTTER

1. You will need to use the lock tool at first to secure and lock the shaft. (SKU: TBSHC)
2. Unscrew the black knob at the back of the guard and remove it by sliding to the left.
3. Remove the cutter retaining screw (left hand thread), (SKU: 83102220) and the washer (SKU: SCT).

Wear protective gloves to manipulate the cutter. Retain the retaining rod (SKU: TBSHC) and make a rotation towards the bottom to remove the cutter on bayonet.

4. To reassemble, reverse procedures.



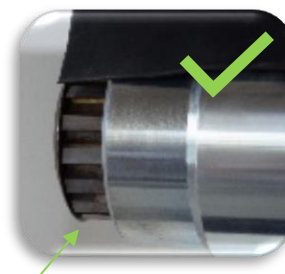
TO CHANGE THE MINI BELT (IN OPTION)

Mini belt
TMS001002MA

1. You will need to use the lock tool at first to secure and lock the shaft. (SKU: TBSHC)
2. Remove the screw (SKU: 83102220) (left hand thread) and the washer (SKU: SCT).
3. Pull the rubber wheel out of the shaft.
4. Change the sandpaper belt.
5. Reverse procedures to reassemble.

TO ADJUST THE TRIMMER SHIELD (GSL)

1. Use an Allen key, provided, to release the shield (1/8").
2. The trimmer shield shouldn't touch cutter, turn set screw clockwise to move Shield outward. Make adjustment to keep a small gap between the shield and the cutter.
3. Adjust the trimmer shield up or down as necessary. Turn knob counter clockwise to raise shield vertically.



✓ *Maintenance is important, see our recommendations page 19-21.*

BRUSH UNIT

1. Open the dust damper below the polishing wheels.
2. Switch on the device by pressing the green button for the sander.
3. Never grasp into the running device! Switch off the device immediately after using it!
4. Change the polishing brushes in the following direction:
 - Switch off the machine by pressing the main switch off
 - Loosen the retaining screws on the polishing fittings flange using allen key.
 - Installed the new brush on the bayonet tighten the fittings.
 - Check the set-screws before operating with the unit for a tight fit.



Only for S755 XL (G2) : contains tow brushes at left are fixed and two brushes at right are on bayonet.

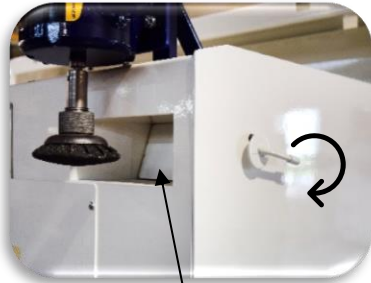
NAUMKEAG

It is possible to adjust the blasting angle using the handles on the right of the motor. Open the naumkeag vent before using this tool.

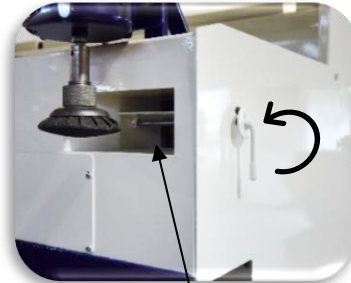


OPEN DUST VENT

Pull down the handle at the right of the machine to open the dust vent. Do the reverse procedure to close it.



CLOSE



OPEN

SAND PAPER REPLACEMENT

The sand paper can be obtained in various grit to suit your needs and are easily changed.

- Sandpaper 80 grit, SKU: PN80
- Sandpaper 100 grit, SKU: P100
- Sandpaper 120 grit, SKU: PN120

TO REPLACE THE SAND PAPER

1. Unscrew the nut.
2. Move up the washer and change de sand paper.
3. If necessary, it is possible to change the pad (PN) according to its wear. Repeat the procedure for changing paper.



DUST BAG AND DUST DRAWER

Dust composed of leather, rubber and plastic is combustible and can readily be set on fire by a lighted cigarette or sparks. This can occur whether the dust is in the dust bag or the machine duck work leading to the dust bag. **Do not sand or grind metal with the finisher.**

The cleaner you keep the dust bag, the less likely you are to burn a hole in it. Failure to shake the dust bag and empty the dust drawer daily will not only increase this likelihood, but will also cause a significant loss of dust extraction from the sanding, trimming and brushing areas.



- ✓ *Maintenance is important, see our recommendations page 17 & 22.*

ACCESSORIES



- EYE PROTECTION SHOULD ALWAYS BE WORN BY THE OPERATOR AND OTHERS IN THE WORK AREA WHEN USING THE ACCESSORIES SUPPLIED WITH THE LANDIS FINISHER. EYE PROTECTION IS REQUIRED FOR PROTECTION FROM FLYING DEBRIS AND DUST, WHICH COULD CAUSE EYE INJURY.



ALL ACCESSORIES ARE MOUNTED ON BAYONET FITTING

One end of the sanding shaft is machined to accommodate bayonet fitting (quick change). Extra tools and sanding wheels are available on request.

When removing the quick change fittings, use the special black spanner wrench (CCL) supplied with the machine. To remove, engage the spanner in the hole near the end of the bayonet fitting and apply a sharp rap downward. Before putting on a fitting be sure the opening ends are cleaned. Hand tightening is sufficient to hold the fitting in proper position.

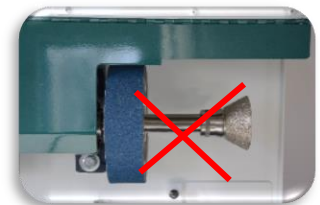
N.B. When properly mounted, the bayonet fitting will tighten itself by rotating it in the socket in the opposite direction of the sanding belt rotation.



- FAILURE TO PROPERLY MOUNT THE ADAPTOR WILL RESULT IN FLYING APART AND POSSIBLE INJURY TO THE OPERATOR AND OTHERS IN THE WORK AREA.
- THESE QUICK CHANGE ACCESSORIES SHOULD BE PROPERLY ENGAGED ON THE SHAFT TO ENSURE SAFE OPERATION. MAKE SURE PIN ON SHAFT ENGAGES THE ADAPTOR CORRECTLY.
- THE ACCESSORY MUST BE POSITIONED IN THE MAIN SHAFT SO THAT IT TIGHTENS ITSELF AS IT IS BEING USED.

HEEL BREASTER ON BAYONET

A Heel breaster mounted on a quick change adaptor is provided with your Finisher and can be **used only on the left side** of the main shaft.



The breaster has a left handed screw assembly, designed to tighten during rotation only on the left side of the machine.

Be careful to install the half-moon sandpaper in the groove of the aluminium breaster. Failure to properly install it will cause vibration when sanding.

MAINTENANCE

A properly maintained machine will give you years of satisfactory service, where as an abused machine will not. We strongly recommend that you observe the following procedures for your own benefit and safety.



EYE PROTECTION SHOULD ALWAYS BE WORN BY THE OPERATOR AND OTHERS IN THE WORK AREA WHEN SERVICING THE MACHINE. EYE PROTECTION IS REQUIRED FOR PROTECTION FROM FLYING DEBRIS AND DUST, WHICH COULD CAUSE EYE INJURY.

DAILY AND WEEKLY MAINTENANCE

Clean your S755 (G2) / S755 XL (G2) Finisher daily.

DUST BAG

Shake dust bag regularly with the handle on the top of the machine.



DUST DRAWER

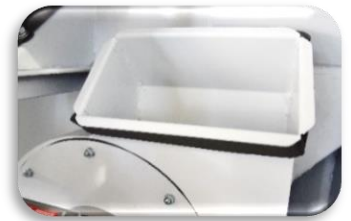
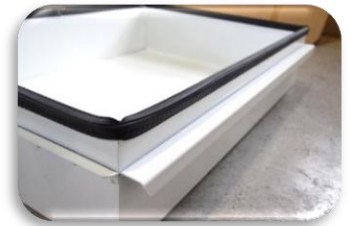
1. Open the front door of the finisher and turn the 2 handles to open dust drawer.
2. Empty dust drawer daily.
3. The magnets will keep close the front door.



Magnet



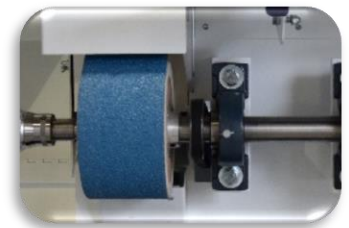
4. Verify if the drawer is perfect adjusted to the seal. It's possible to adjusted the level of the drawer. Screw or unscrew the set screw with an Allen Key. Make sure the block bellow is aligned to the ledge.
5. Check seal sound drawer and replace if damaged or if it is not sealed properly.
6. Check seal between the top of the drawer and the dust bag.
7. When the dust drawer is full, dust may spill when the drawer is removed. Vacuum out the bottom of the machine before sliding back the drawer.



N.B. The cleaner you keep the dust bag, the less likely you are to burn a hole in them. Failure to shake the dust bag and empty the dust drawer daily will only increase this likelihood, but also cause a significant loss of dust extraction from the sanding, trimming and brushing areas.

RUBBER AND FELT WHEEL

Clean the rubber/felt surface to avoid accumulation of dust. If there is too much accumulation, the sanding belt won't stay on the rubber/felt wheel and you will have problems with tracking.



IDLER WHEEL

Clean the flat surface to avoid accumulation of dust with a scraper.



FILTERS

Change them (3 units) when necessary (SKU: G8PM300399). Put the green side towards the outside of the machine.



TRIMMER CUTTER

1. Check trimmer cutter condition daily.
2. Check for wear on hardened steel cutters and sharpen if necessary.
For carbide cutter, return to Landis for sharpen.
3. Check for broken teeth on the carbide cutter, if supplied with your machine, replace cutter.
4. Clean with the air jet the trimmer section.



Worn carbide cutter

V-BELT

1. Check the belt with a complete turn by turning the sole trimmer.
2. Check its condition. If it is cracked, replace it.



- **MOTOR REPLACEMENT REQUIRES WORKING WITH 220 VOLTS ELECTRICAL WIRING AND CAN BE HAZARDOUS. PLEASE CALL A QUALIFIED ELECTRICIAN OR A LANDIS TECHNICIAN.**

MOTOR

Clean each side of the motor and the wheels with a vacuum cleaner or an air jet.

If you believe that the motor present an anomaly, please contact our customer service at 1 800 634-0806.

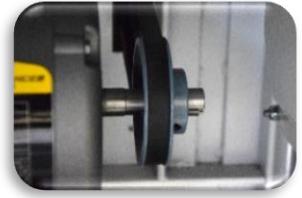


- **BE ABSOLUTELY CERTAIN TO RECONNECT THE ELECTRICAL WIRE TO THE PROPER TERMINALS.**
- **FAILURE TO DO SO CAN RESULT IN IMPROPER MOTOR ROTATION, A RUINED MOTOR, FIRE, OR INJURY TO YOURSELF.**
- **DUST FROM FINISHER IS COMBUSTIBLE. DO NOT SMOKE WHILE CLEANING THE MACHINE AND DUST COLLECTOR.**
- **DAMAGED DUST BAG OR DUST DRAWER SEALS WILL ALLOW THE ESCAPE OF COMBUSTIBLE MATERIALS CAUSING A FIRE HAZARD AROUND THE MACHINE.**
- **CHECK DAMAGED PARTS. BEFORE FURTHER USE OF A TOOL, GUARD OR OTHER PART THAT IS DAMAGED, CHECK CAREFULLY TO DETERMINE THAT IT WILL OPERATE PROPERLY AND PERFORM ITS INTENDED FUNCTION. CHECK FOR MOUNTING OR ANY OTHER CONDITION THAT MAY AFFECT ITS OPERATION. A TOOL, GUARD OR OTHER PART THAT IS HARMFULLY DAMAGED SHOULD BE PROPERLY REPAIRED OR REPLACED.**
- **IF THE ELECTRICAL CORD, PLUG OR WIRING SHOULD BECOME FRAYED OR DAMAGED, REPLACE IT AT ONCE.**
- **REPLACE ALL DOORS AND GUARDS BEFORE OPERATING THE MACHINE.**
- **DO NOT OPERATE MACHINE WITH SANDER HOUSING DOORS OPEN.**
- **AFTER MAKING ADJUSTMENTS, REMOVE ALL WRENCHES AND OTHER TOOLS BEFORE OPERATING THE SANDER.**
- **USE EXTRA CAUTION WHEN STARTING THE FINISHER FOR THE FIRST TIME AFTER INSTALLING A NEW TOOL OR PART.**

MONTHLY MAINTENANCE

RUBBER SANDING PULLEY

1. Check the rubber sanding pulley's surface for any accumulation of dust.
2. Clean if necessary with an air jet.
3. Replace the wheel if worn.



RUBBER/FELT SANDING WHEEL

Check the rubber/felt sanding wheel surface for any accumulation of dust. Clean if necessary with air jet and a scraper. Replace the wheel if worn.

TRIMMER, MINI BELT & BACK FILTERS

To prolong the life of your trimmer clean with an air jet.



DUST DAMPERS

Check for proper opening and closing of all dust dampers, removing and cleaning any accumulation around the openings.



V-BELT TENSION

1. Check tension and adjust if necessary
2. Disconnect the electrical power supply.
3. Check the tension of the V-belt running to the motor; it should depress approximately 12 mm (½") when pressed in the middle with moderate force.
4. Rotate the V-belt by hand, visually inspecting the belt for damage.



5. If tensions or conditions are bad, adjust tension or replace V-belt.
6. After making adjustments, remove all wrenches and other tools before operating the Finisher.



- **DO NOT OVER TIGHTEN V-BELT, AS TO DO SO WILL CAUSE RAPID BELT WEAR AND PREMATURE BEARING FAILURE.**
- **AFTER MAKING ADJUSTMENTS, REMOVE ALL WRENCHES AND OTHER TOOLS BEFORE OPERATING THE FINISHER.**

3 MONTHS MAINTENANCE



- **BEFORE REMOVING DUST BAG, DISCONNECT ELECTRICAL POWER SUPPLY.**

DUST BAG

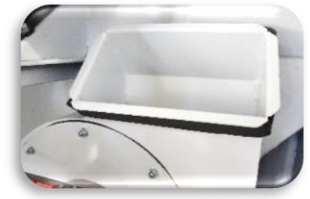
Once 3 months, you should remove the dust bag for a thorough cleaning.

The dust bag is removed by:

1. Before removing dust bag, disconnect electrical power supply.
2. Remove temporarily the back filters.
3. Unscrew and remove the metal collet hose on top of the dust drawer.
4. Remove the velcro strap (888443LG) from the blower entry.
5. You can use a vacuum cleaner to clean both inside and outside of the dust bag.
6. 2 solutions for cleaning the bag:
 - Dry cleaning
or
 - Cold water and drying flat



7. Verify if the bag for holes or torn.
8. Verify the of the seal around the exit of the blower. If damaged, replace it.
9. Repeat the opposite steps to reposition the bag.
10. Change back filters only if they are defiled (SKU: G8PM300399).



LUBRICATION

Your S755 (G2) / S755 XL (G2) Landis Finisher is equipped with sealed bearings throughout, which should be replaced if they ever wear out.

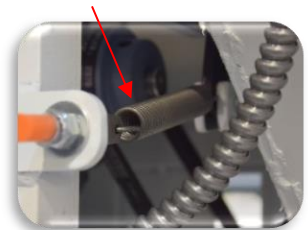
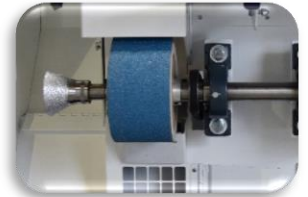
Other parts should not require any lubrication, only cleaning the parts is required.

Lubrication will only attract dust and would be more harmful than helpful.

TROUBLE SHOOTING

SANDING BELT 100 MM (4'') DOESN'T STAY ON THE RUBBER/FELT WHEEL

1. First check if the release tension arm is at the right place. Pull it.
2. Secondly verify if there is dirt or dust clogged on the rubber/felt wheel. If so, clean it with a sandpaper or with a scraper.
3. Check on the back of the machine is the spring is giving enough tension to the idler wheel. To increase the tension on the spring unlock the nut and turn the threaded rod to pull the spring.



If there is still a problem, contact our customer service at 1 800 634-0806.

V-BELT ADJUSTMENT AND REMOVAL

All V-Belts on the S755 (G2) / S755 XL (G2) Landis Finisher should be checked monthly for proper tension and general condition. Loose V-Belts will decrease the power available to the various tools and lower the efficiency of your Finisher.

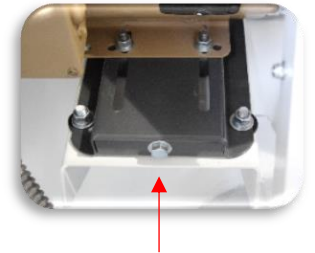
If you discover a worn or frayed belt, replace it now so it won't break at an inconvenient time.



- **DISCONNECT ELECTRICAL POWER SUPPLY BEFORE WORKING ON THE MACHINE.**

TO CHECK V-BELT TENSION

1. Disconnect the electrical power supply.
2. Check the tension of the V-belt running to the motor; it should depress approximately 12 mm (1/2") when pressed in the middle with moderate force.
3. Rotate the V-belts by hand, visually inspecting the belts for damage.
4. If tensions or conditions are bad, adjust tension or replace V-belt. To adjust the tension, unscrew the nut positioned at the center of the base. Move the motor late up or down accordingly to your needs.



- **DO NOT OVER TIGHTEN V-BELTS, AS TO DO SO WILL CAUSE RAPID BELT WEAR AND PREMATURE BEARING FAILURE.**
- **AFTER MAKING ADJUSTMENTS, REMOVE ALL WRENCHES AND OTHER TOOLS BEFORE OPERATING THE FINISHER.**

NAUMKEAG MOTOR

To remove the Naumkeag motor, these procedures should be followed:

1. Disconnect the electrical power supply.
2. Remove the complete unit by taking off the Naumkeag knob.
3. Remove four (4) screws, nuts and washers that hold motor to swivel plate. Remove motor.
4. Loosen set screw on Naumkeag shaft and pull out the adapter from the shaft motor.
5. Reassemble with new motor in reverse order to above procedures.



If there is still a problem, with the shaft, bearing, idler wheel, motor, electricity, contact our customer service at 1 800 634-0806.

LOST OF SUCTION IN DUST COLLECTION

1. Dust drawer may be full. Empty it.
2. Blower fan may be clogged. Remove the dust container. Remove the trap and clean the blower fan. Replaced the trap and the dust container.
3. Finisher too close to the back wall. Your Finisher should be 6" distance from the wall.



BELT CREEPS

Belt worn out or frayed one side. Install new belt.

MOTOR STOPS WITH SWITCH ON

CAUTION! *Turn switch off immediately*

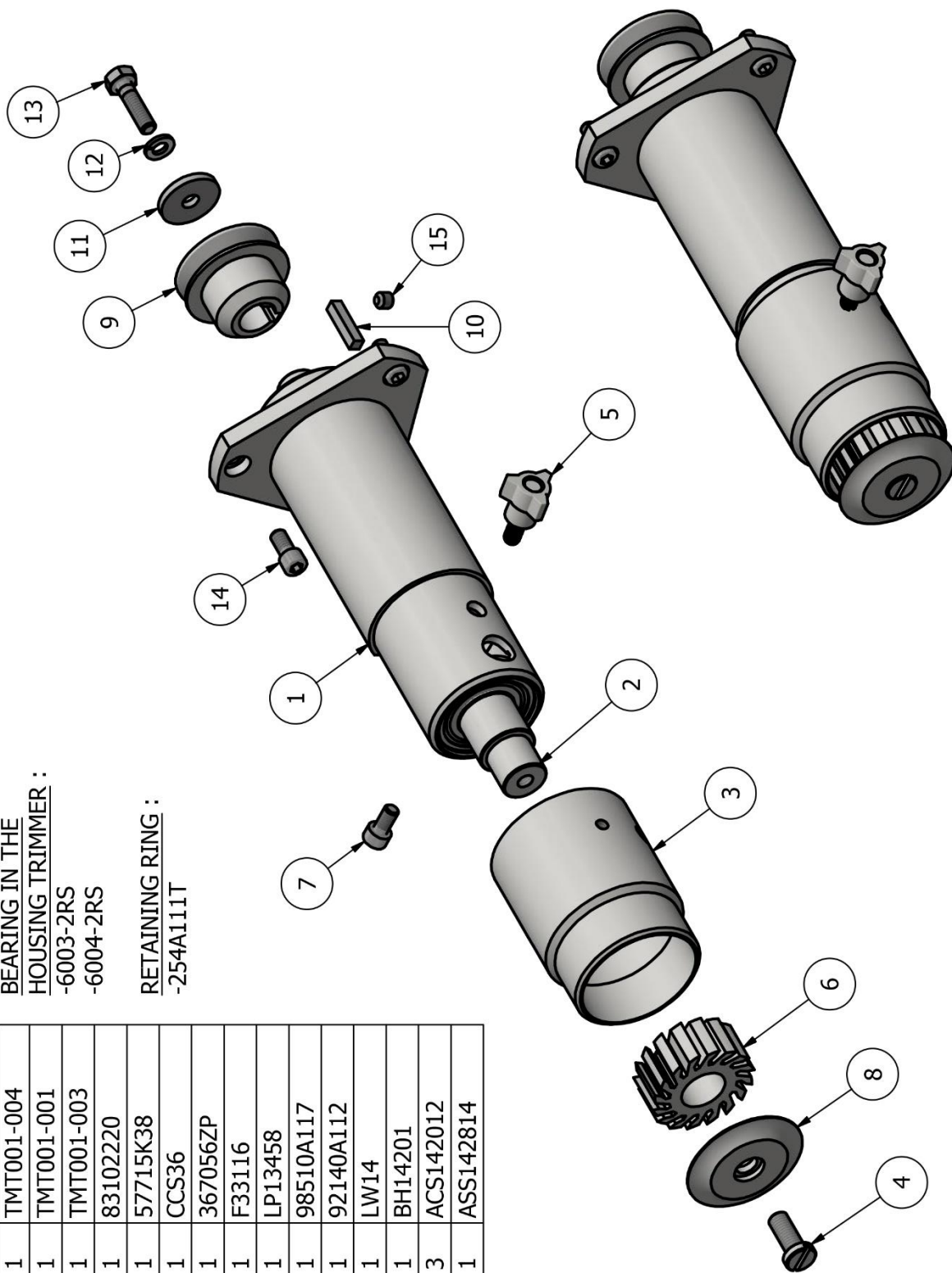
1. Too much equipment operated on same circuit on which Landis S755 (G2) / S755 XL (G2) Finisher is connected. Check circuit breaker or fuse box.
2. An overload may have caused the thermal overload protector in motor to shut off current. Be sure sander is off, then find and eliminate cause for overload. Some motors are equipped with manual Re-Set thermal overload protector wait at least 30 minutes, then firmly press Re-Set button on motor with eraser end of pencil or a small blunt dowel. After approximately 30 minutes you should be able to hear or feel overload protector click in when pushed to reset. After Re-Set clicks in, turn switch on and motor should run normally. If the motor has no Re-Set button, wait 30 minutes that the engine would shrink. After this time, the engine should reset itself.

LANDIS S755 (G2) / S755 XL (G2) - SOLE TRIMMER

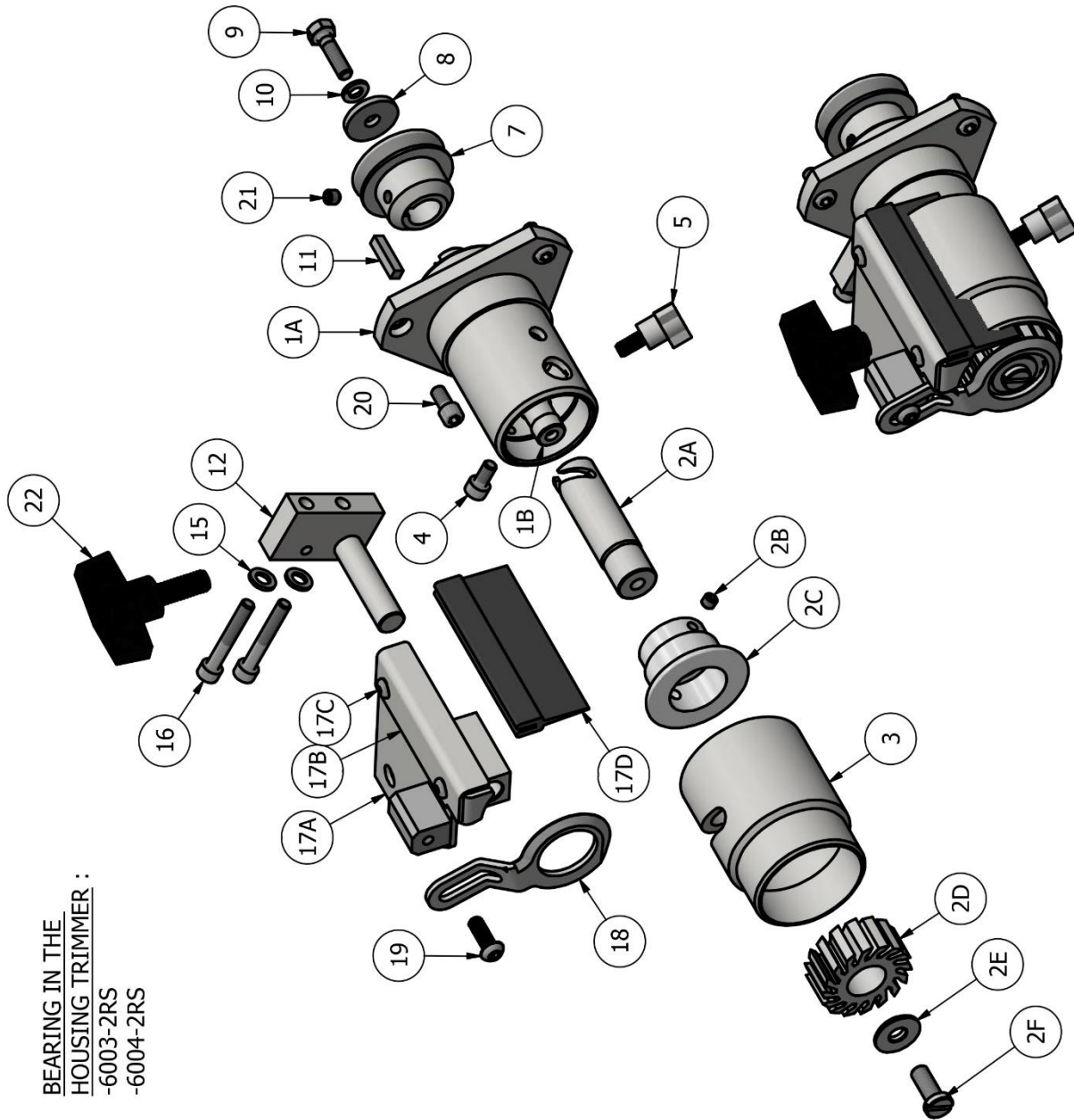
PARTS LIST		
ITEM	QTY	PART NUMBER
1	1	TMT001-004
2	1	TMT001-001
3	1	TMT001-003
4	1	83102220
5	1	57715K38
6	1	CCS36
7	1	367056ZP
8	1	F33116
9	1	LP13458
10	1	98510A117
11	1	92140A112
12	1	LW14
13	1	BH14201
14	3	ACS142012
15	1	ASS142814

BEARING IN THE HOUSING TRIMMER :
 -6003-2RS
 -6004-2RS

RETAINING RING :
 -254A111T



LANDIS S755 (G2) / S755 XL (G2) - HEEL TRIMMER



BEARING IN THE HOUSING TRIMMER :
 -6003-2RS
 -6004-2RS

PARTS LIST		
ITEM	QTY	PART NUMBER
1A	1	TMS001-001
1B	1	TMS001-003
2A	1	TMS001-002
2B	1	ASSM6112
2C	1	144-703-106
2D	1	CCTS36
2E	1	SCT
2F	1	83102220
3	1	TMT001-003
4	1	367056ZP
5	1	57715K38
7	1	LP13458
8	1	92140A112
9	1	BH14201
10	1	LW14
11	1	98510A117
12	1	TMT001-005
15	2	LW14
16	2	90128A268
17A	1	TMT004-001A
17B	1	TMT004-006
17C	1	VTR103214
17D	1	12335A29
18	1	GSLP
19	1	91306A379
20	3	ACS142012
21	1	ASS142814
22	1	65035K45